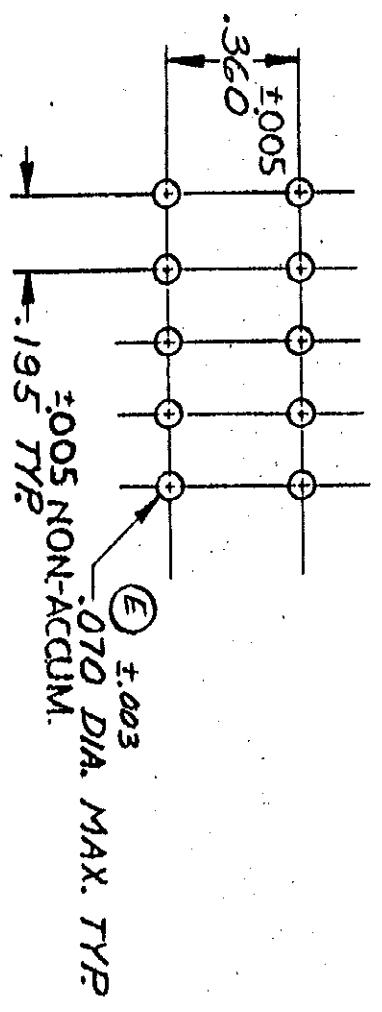
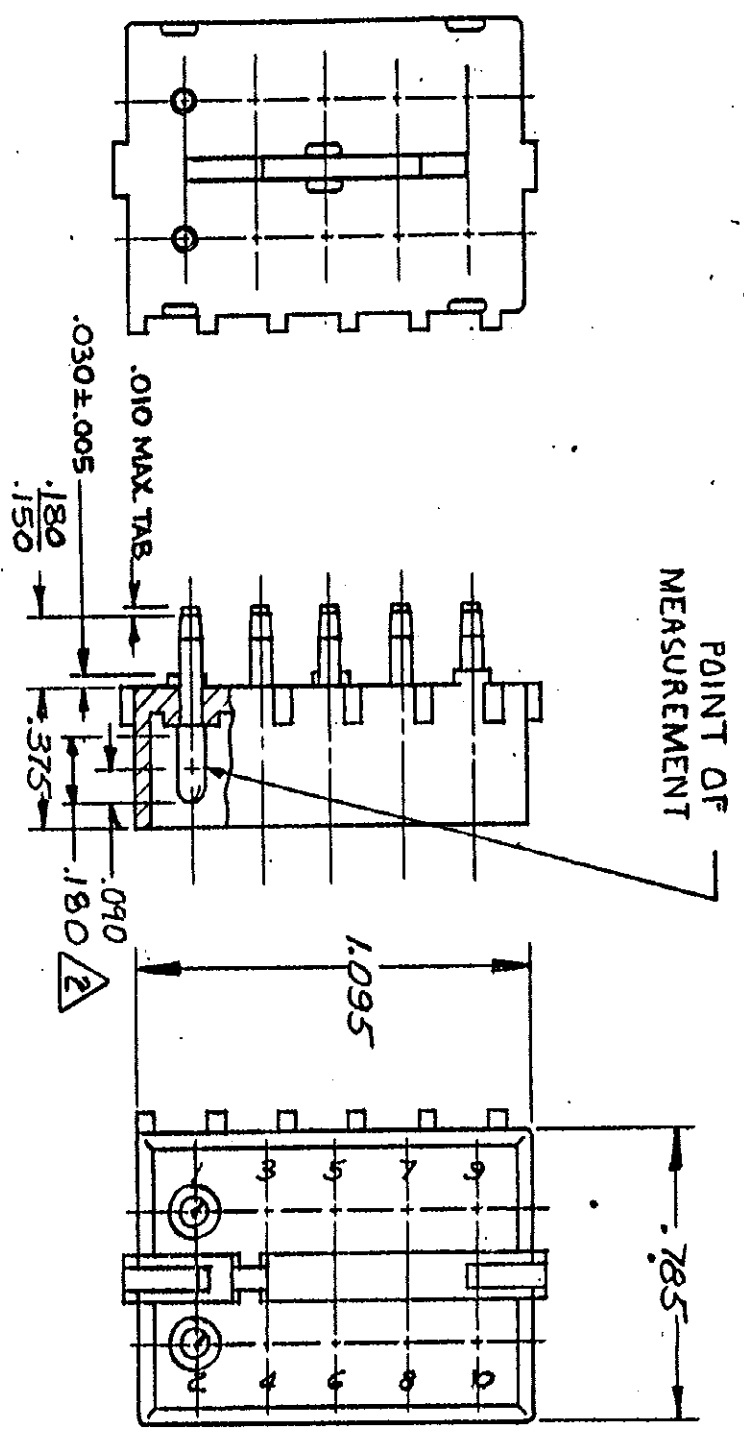




DIMENSIONS IN INCHES. DO NOT SCALE PRINT.



RECOMMENDED LAYOUT FOR  
.062 P.C. BOARD

- PARTS COMPLY WITH AMP SOLDERABILITY SPEC. NO. 109-11-3.
- CONTACT IS PLATED OVERALL WITH .000050 NICKEL, THEN .000030 GOLD OVER CONTACT LENGTH INDICATED AND WHITE TIN ON SOLDER TAIL END.

Unpublished copy not to be reproduced nor published without written permission of AMP Incorporated.

LTR	REVISION RECORD	DR	CHK	DATE
R	OBS 1314 PER CM-100	PC	RS	4-28-80
S	PER CM 2213	RS	3/20/80	
T	PER ECN CM-2706	NG	RS	8-9-80
T	ABS 1-1, 1-2			
	OBS 1-5 & 1-6			

NUMBER	380991
DESCRIPTION	
REQUIRED PER ASSEMBLY	

DR	9. Edman	6-12-73
CHK	P. Brennan	6-13-73
DE	AMP	AMP PRODUCTS COVERED BY PATENTS AND/OR PATENTS PENDING.
NAME	10 CIRCUIT P.C. BOARD	
LOC	CM	
NO	B	
NO	380991	
REV	T	

1-380991-0	NYLON	-NATURAL	COPPER ALLOY - PRE-TIN
ASSEMBLY NO.	HSG. MATL & COLOR	PIN MATL & FINISH	
2-380991-0	NYLON	-NATURAL	COPPER ALLOY - GOLD

SEE TABLE



CUSTOMER COPY  
REFERENCE ONLY